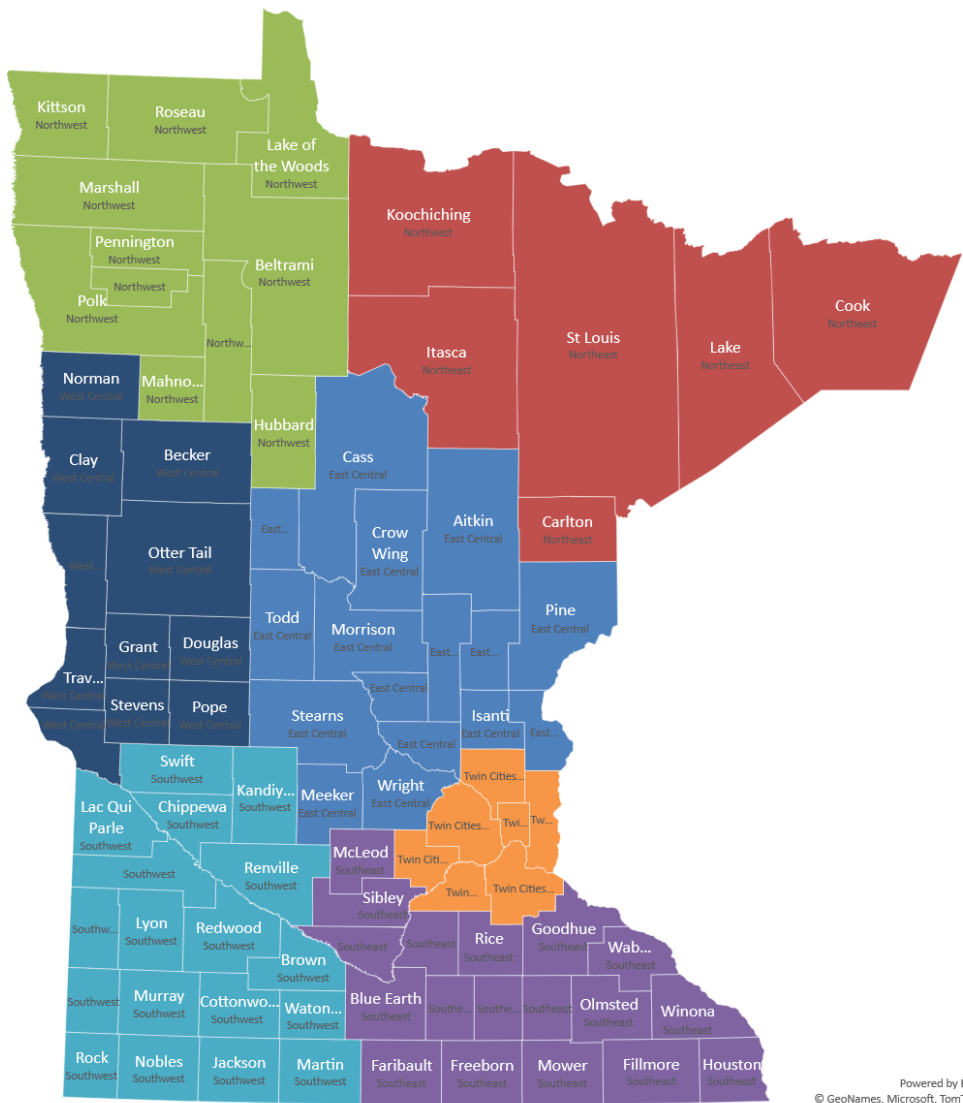


# ***Nursing Facility Occupancy Survey Data 2024***



- East Central
- Northeast
- Northwest
- Southeast
- Southwest
- Twin Cities Metro
- West Central

Powered by Bing  
© GeoNames, Microsoft, TomTom

# Region

## East Central

## Northeast

## Northwest

## Southeast

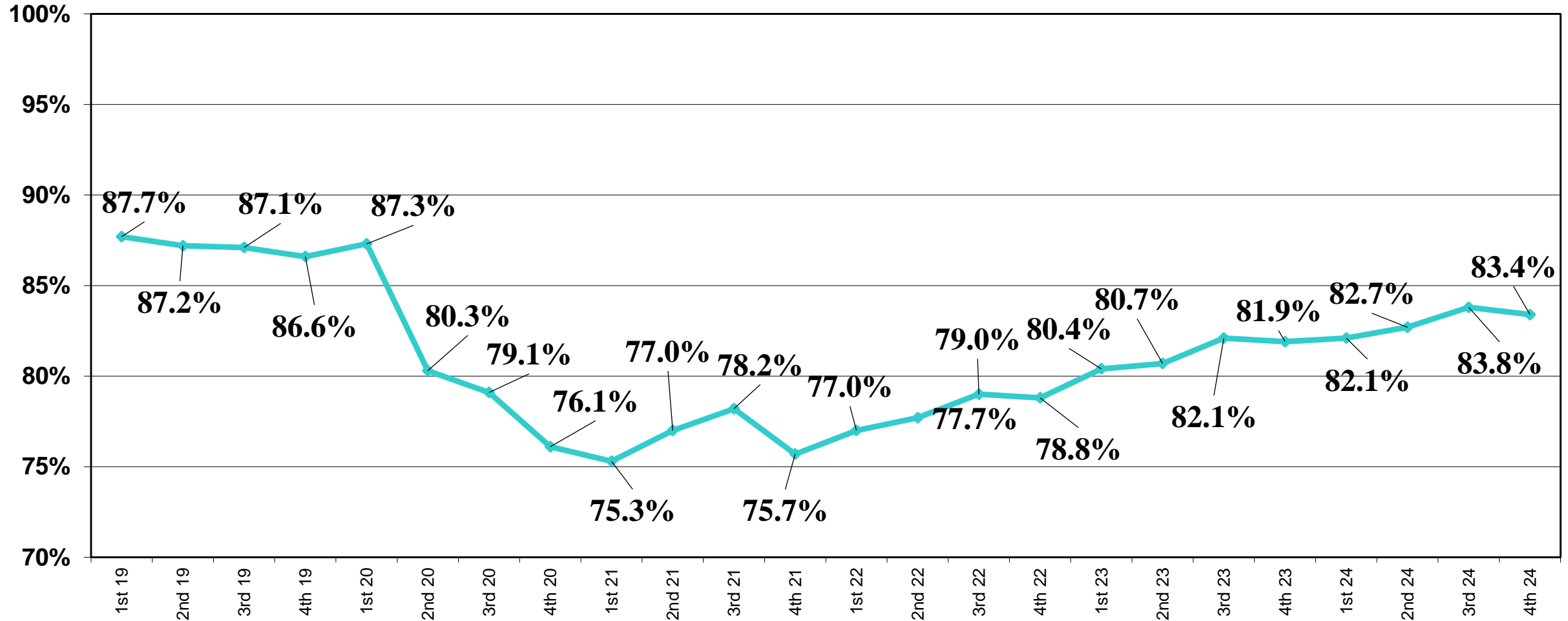
## Southwest

## Twin Cities Metro

## West Central

203 Survey Responses for Full Year 2024

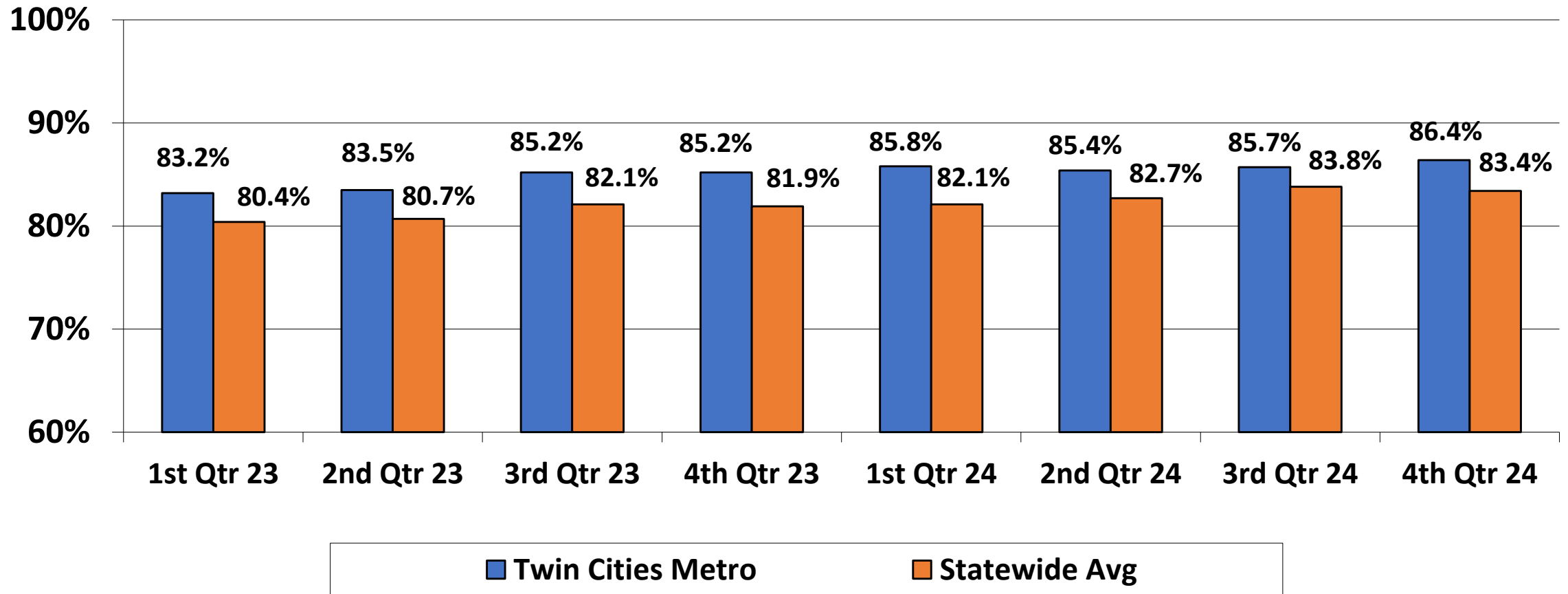
# Nursing Home Occupancy Improving in 2024 but Still Below Pre-Pandemic Levels



Source: Combined Association Occupancy Surveys

# Occupancy for Minnesota's Nursing Homes – Twin Cities Metro

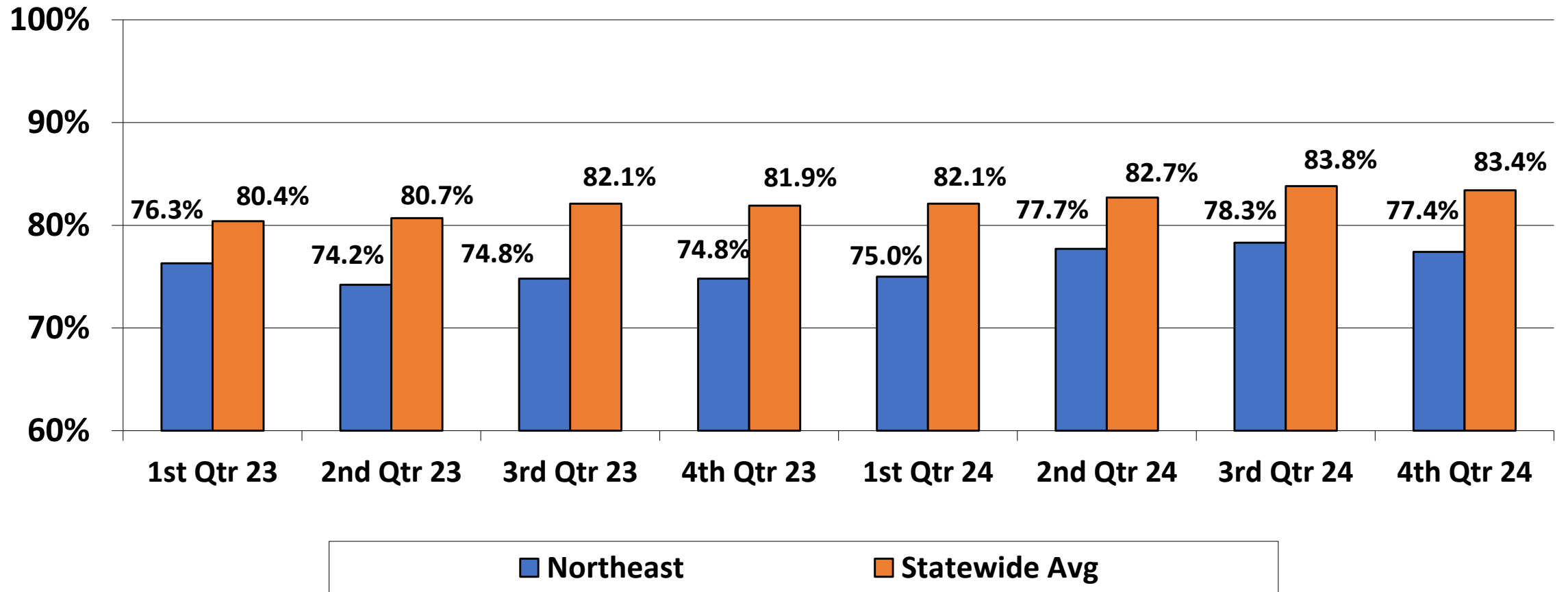
Consistently Above State Avg since Beginning of 2023, Highest Occupancy Region in State throughout 2024



Source: Combined Association Occupancy Surveys

# Occupancy for Minnesota's Nursing Homes – Northeast

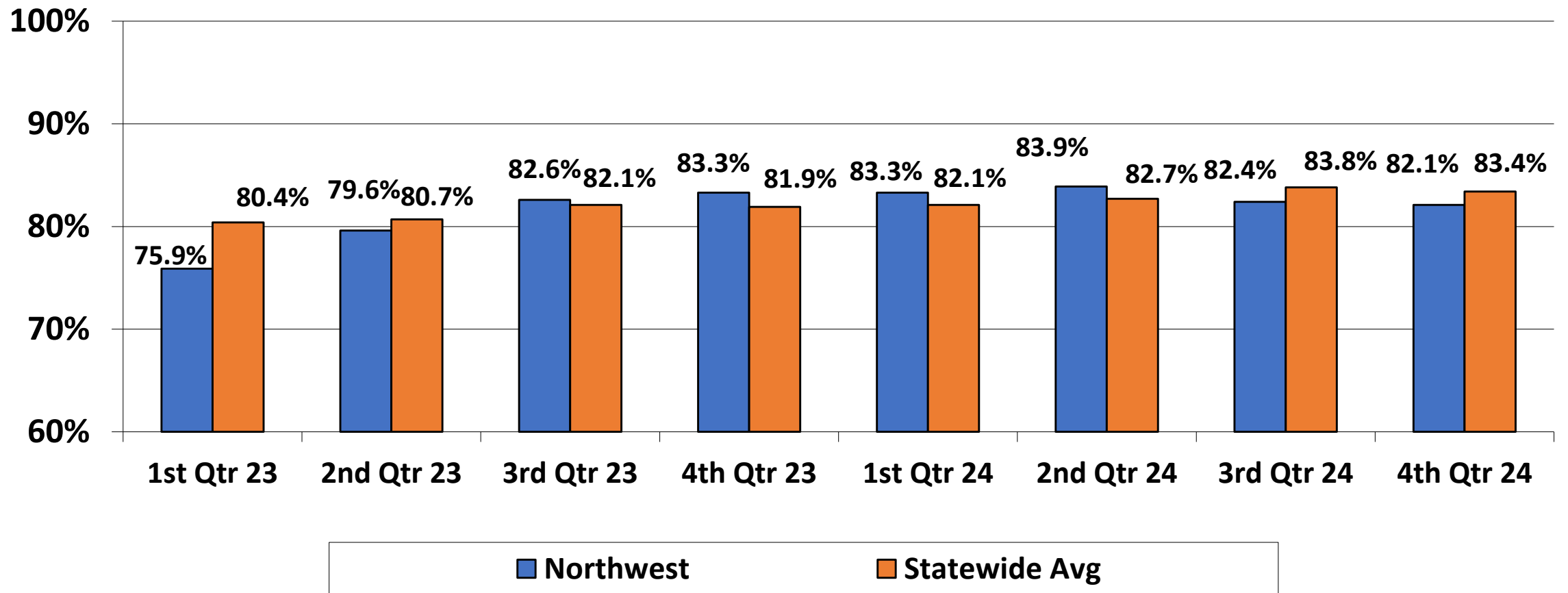
Well Below State Average since Beginning of 2023, Lowest Occupancy Region overall in 2024



Source: Combined Association Occupancy Surveys

# Occupancy for Minnesota's Nursing Homes – Northwest

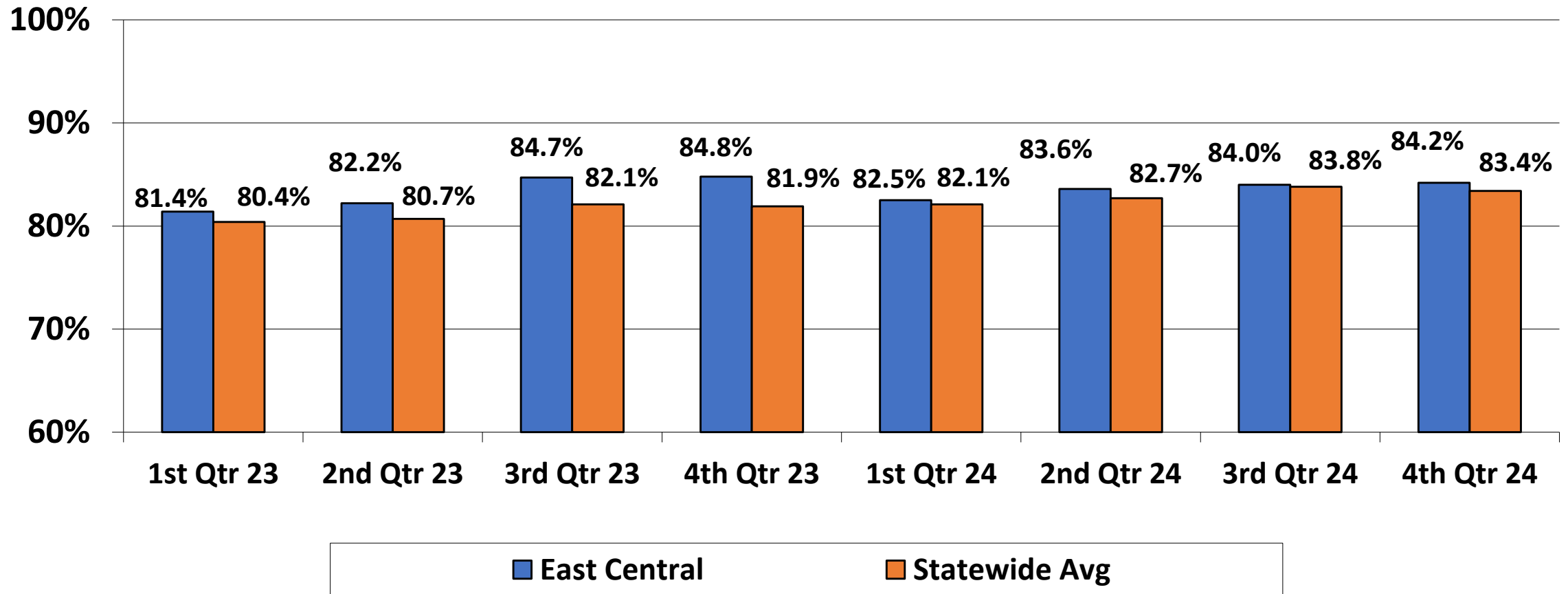
Slipped below State Average in Second Half of 2024 after being over for a Year



Source: Combined Association Occupancy Surveys

# Occupancy for Minnesota's Nursing Homes – East Central

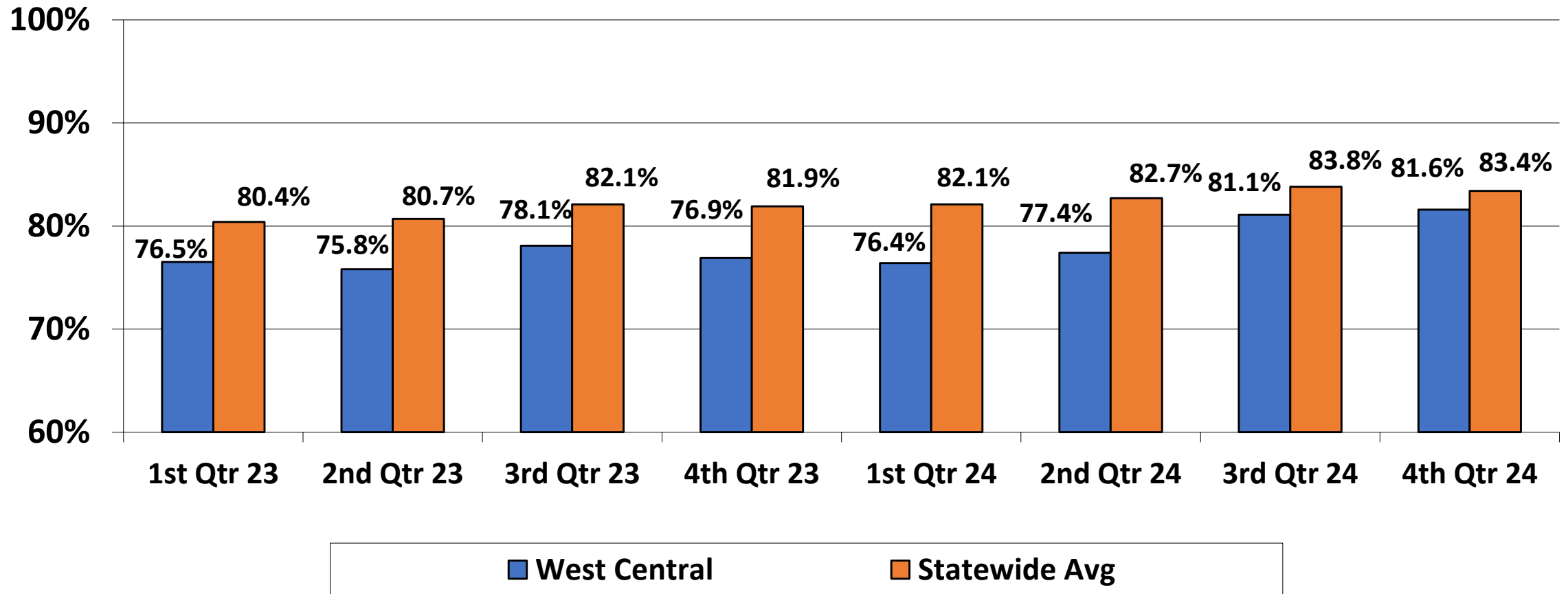
Above State Average all of last Two Years



Source: Combined Association Occupancy Surveys

# Occupancy for Minnesota's Nursing Homes – West Central

Below State Average all of last Two Years, but has Gained 4% in Second Half of 2024

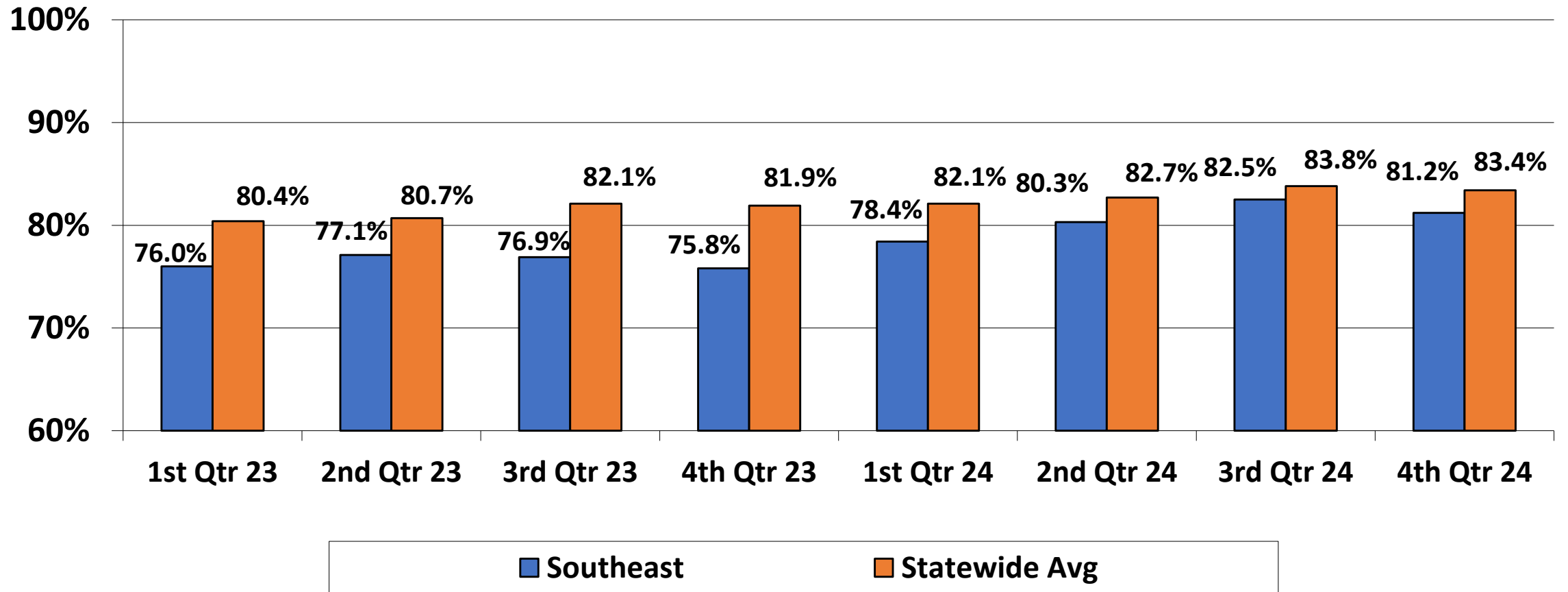


Source: Combined Association Occupancy Surveys



# Occupancy for Minnesota's Nursing Homes – Southeast

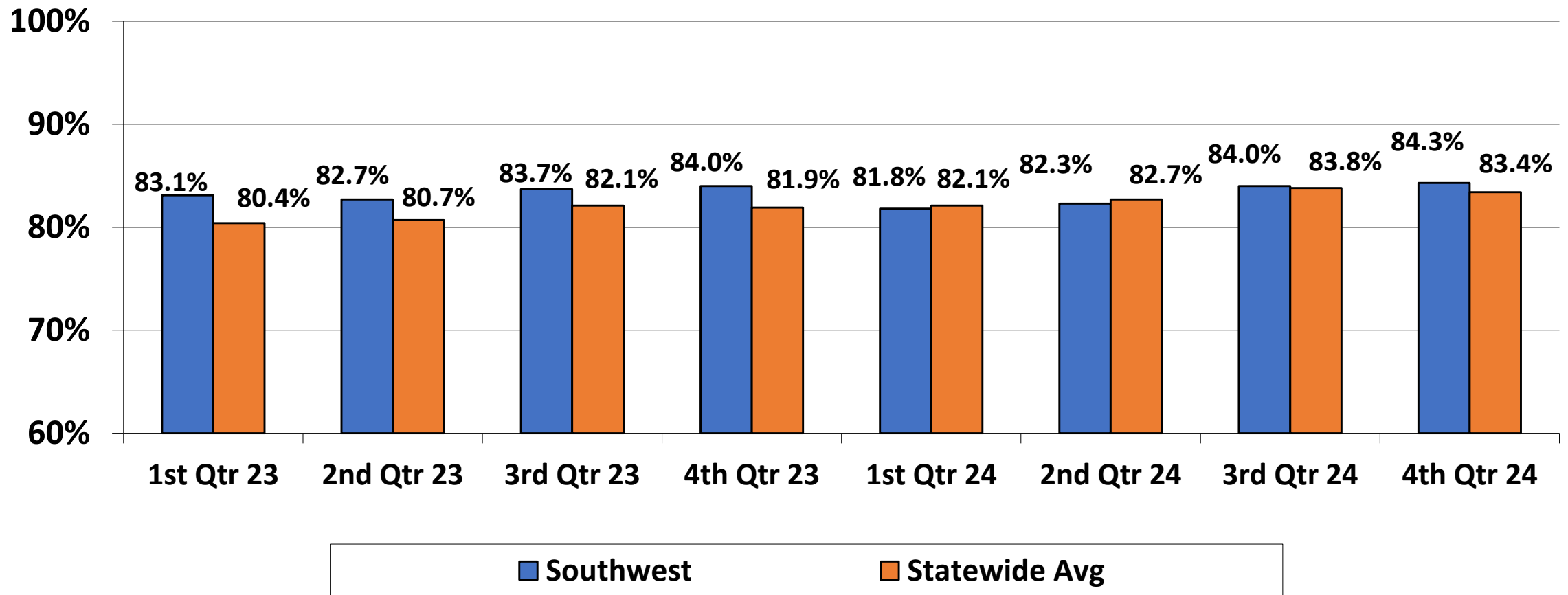
Below State Average all of last Two Years, but has Moved Closer to Average in 2024



Source: Combined Association Occupancy Surveys

# Occupancy for Minnesota's Nursing Homes – Southwest

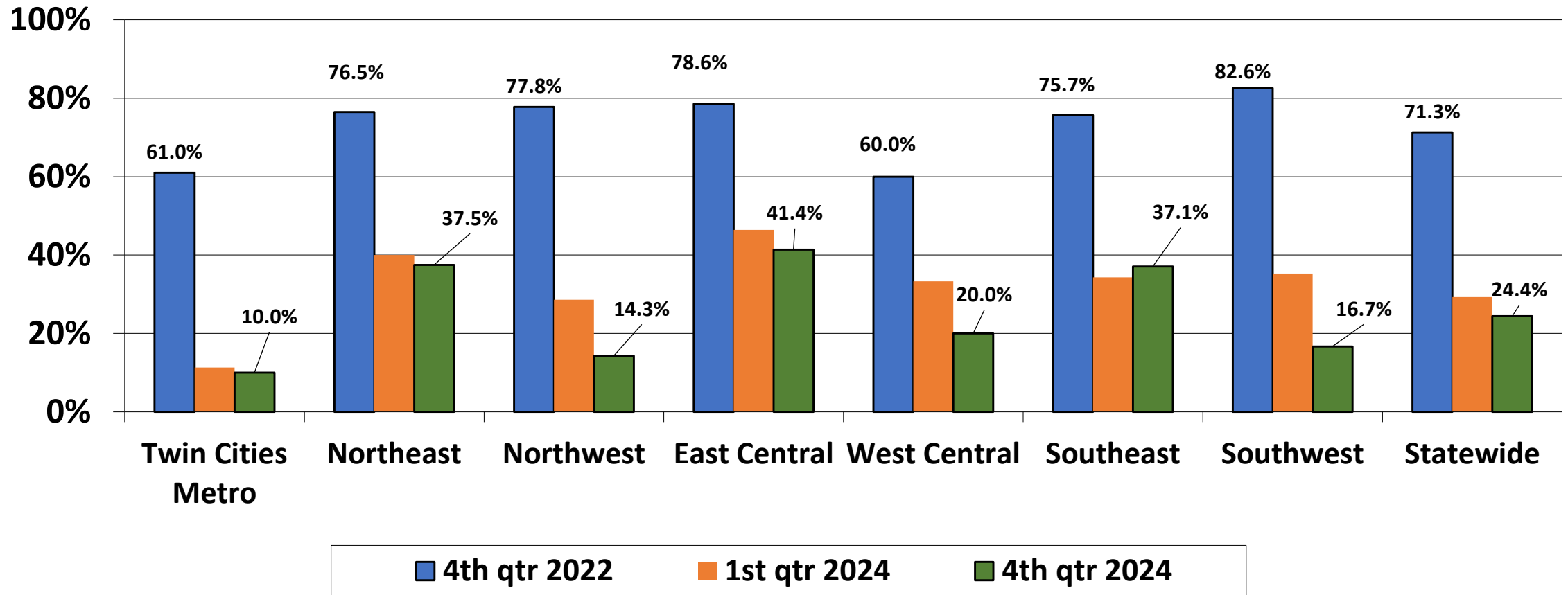
Returned to being Above State Average in Second Half of 2024



Source: Combined Association Occupancy Surveys

# Limiting Census Due to Staffing has Become Less of a Problem

Some Regions Still Facing Significant Staffing Challenges



Source: Combined Association Occupancy Surveys